

Xbox LIVE

Xbox LIVE® is your connection to more games, more entertainment, more fun. Go to www.xbox.com/live to learn more.

Connecting

Before you can use Xbox LIVE, connect your Xbox 360 console to a high-speed Internet connection and sign up to become an Xbox LIVE member.

For more information about connecting, and to determine whether Xbox LIVE is available in your region, go to www.xbox.com/live/countries.

Family Settings

These easy and flexible tools enable parents and caregivers to decide which games young game players can access based on the content rating. Parents can restrict access to mature-rated content. Approve who and how your family interacts with others online with the Xbox LIVE service, and set time limits on how long they can play. For more information, go to www.xbox.com/familysettings.

GAME CONTROLS



Controls	In-Game Function	Menu Function
Left stick	Move	Move Menu Highlight
Right stick	Aim	
Right stick click	Zoom	
D-pad		Move Menu Highlight
LB	Sprint	
LT	Activate special ability	
RB	Dodge	
RT	Fire Weapon	
A button	Jump	Confirm
B button	Change Weapon	Cancel
X button	Reload	Start Game (Lobby)
Y button	Interact	Change Colour (Lobby)
START button	Pause Game	
BACK button	Shows the current objective	

MAIN MENU

EARTH NEEDS YOU!

The Ravagers have come to Earth. Strike Force Lightning and the EDF is all that stand in the way of world domination. Grab your squad mates and gear up... it's going to be one heck of a fight.

RULES OF ENGAGEMENT - Game Modes

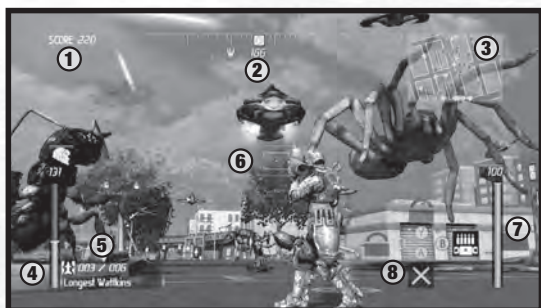
All game modes can be played either by yourself or with friends.

Campaign Mode – Shoot your way through 3 unique campaigns, each in a different area of New Detroit, or select any mission you have previously unlocked in Campaign Mode.

Campaign Remix Mode – Play “remixed” versions of Campaign Mode missions. Enemy encounters are drastically changed to give each mission a different feel.

Survival Mode – Find out how long you and up to five other EDF Troopers can last against endless waves of Ravagers.

USING YOUR STANDARD ISSUE EDF TACTICAL HEADS UP DISPLAY - The Game Screen



- 1- Player Score
- 2- Compass and Objective
- 3- Mini-Map
- 4- Health Meter
- 5- Weapon and Ammunition
- 6- Aiming Reticule
- 7- Energy Meter
- 8- Special Ability Interface

PAUSING THE DESTRUCTION - The Pause Menu

If you can't handle the onslaught, pause the game. From the Pause Menu, you can access the options menu, restart the mission, or quit to the Main Menu.

In the Options Menu, you can adjust your Control settings and Audio settings.

COMING BACK FOR MORE - Saving Your Game

At ease, soldier. The EDF will always remember your commitment. Earth Defense Force® Insect Armageddon™ saves your progress automatically whenever you complete a mission. You will need 288KB of free space on the Storage Device in order to save your game.